

FACTSHEET

CMORE[®] CT System

Tumor treatment

BlackArmor[®] material is radiolucent in all diagnostic imaging modes and facilitates adjuvant radiation treatment

Seamless connection

Transition between CMORE[®] CT and VADER[®] Pedicle System by a variety of BlackArmor[®] Carbon/PEEK connectors



BlackArmor[®] Carbon/PEEK tulip

The first tulip made of BlackArmor[®] material for artifact-free CT and MRI imaging

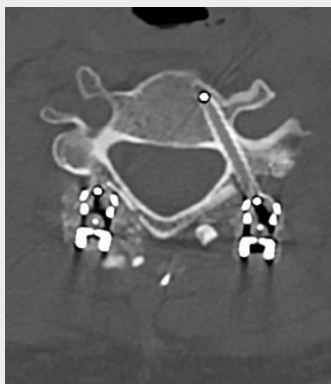
Enhanced bone fixation

Proprietary Ti-iT[®] titanium coating promotes increased surface area for targeted osseointegration



Lateral CT

Nearly 360° metal-free cervical stabilization with BlackArmor[®] Carbon/PEEK screws



Axial CT

Artifact-free CT enables improved postoperative delineation of target volume and critical structures.

CMORE® Screws

Description	Diameter	Length	Increments	Reference number
Screws, made of BlackArmor® Carbon/PEEK, polyaxial, solid	4.0 mm	10–40 mm	2 mm	16-4020-340xx
	4.5 mm	10–40 mm	2 mm	16-4020-345xx
	5.0 mm	25–45 mm	5 mm	16-4020-350xx

CMORE® Shank Screws

Description	Diameter	Length	Increments	Reference number
Screws, made of BlackArmor® Carbon/PEEK, polyaxial, solid, 10 mm smooth shank	4.0 mm	28–34 mm	2 mm	16-4025-340xx

BlackArmor® and Titanium Rods

Description	Curvature	Diameter	Radius	Length	Increments	Reference number
Rods, made of BlackArmor® Carbon/PEEK	Straight	4.0 mm	000	30–60 mm	10 mm	16-4020-1000x
	Curved	4.0 mm	120	30–100 mm	10 mm	16-4020-112xx
S-rods, made of BlackArmor® Carbon/PEEK	Multi curved	4.0 mm	–	200 mm	–	16-40-1MC20-1
	Multi curved	4.0 mm	–	200 mm	–	16-40-1MC20-2
Rods, made of titanium	Straight	4.0 mm	000	300 mm	–	16-40-90030

Titanium Nut Screw

Description	For rod diameter	Reference number
Nut Screw, made of titanium	4.0 mm	16-40-91000

BlackArmor® Connectors

Description	For rod diameters	Reference number
Parallel Connector, Closed, made of BlackArmor® Carbon/PEEK	4 mm and 6 mm	16-4060-0323
Axial Connector, made of BlackArmor® Carbon/PEEK	4 mm and 6 mm	16-4060-0124

icotec ag

Contact in the USA:
 125 High Street
 Suite 220
 Boston, MA 02110
 United States
 Phone (860) 404-6999
 info@icotec-medical.com
 www.icotec-medical.com

Information needed to use the device and a glossary of symbols that may appear on the product labeling and the meaning of the symbols are made available in electronic form; current and previous versions can be downloaded in electronic form at ifu.icotec-medical.com (code = REF) or can be requested by email or phone from icotec. On request, icotec will provide a paper version within seven calendar days at no charge. The electronic versions can be viewed with a freely available PDF reader (e.g., Adobe Acrobat Reader, which can be downloaded at www.adobe.com).



ifu.icotec-medical.com
 Code = REF