

FACTSHEET

# VADER® Pedicle System

## Tumor treatment

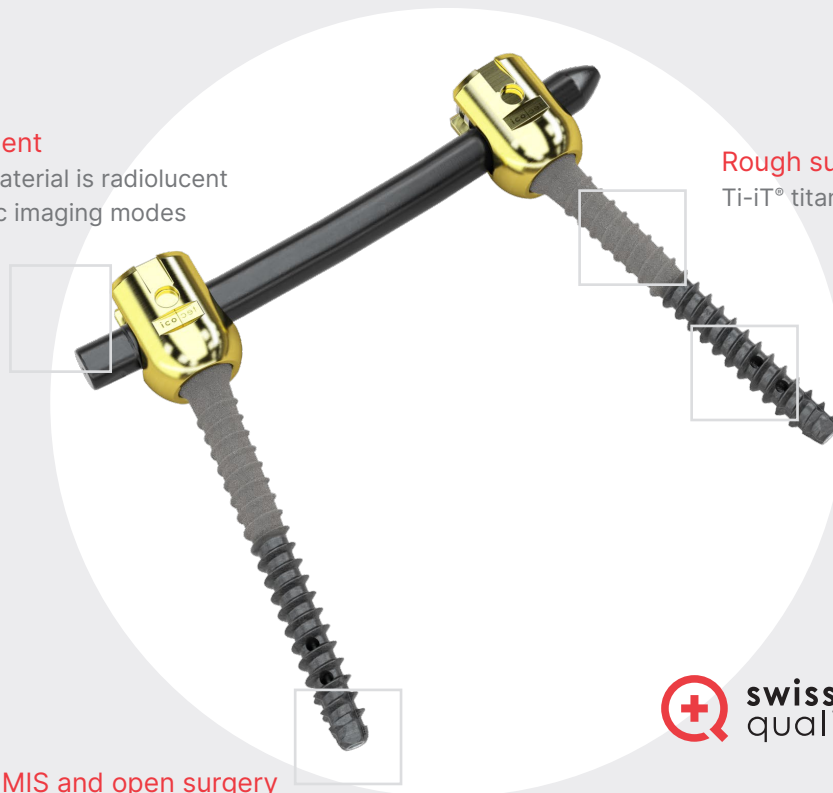
BlackArmor® material is radiolucent in all diagnostic imaging modes

## Rough surface

Ti-iT® titanium coating

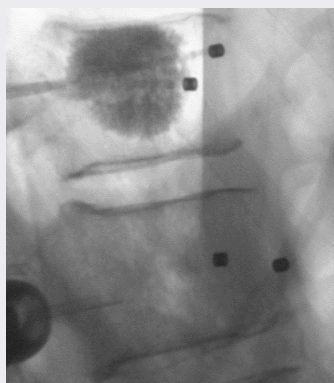
## Optimal screw fixation

Cement augmentation with fenestrated screws



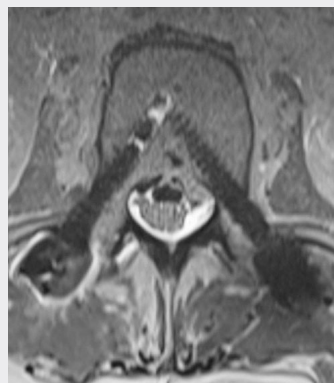
## MIS and open surgery

Cannulated screws with state-of-the-art instruments



## X-ray

BlackArmor® Carbon/PEEK pedicle screws with cement augmentation



## MRI

BlackArmor® Carbon/PEEK pedicle screws



## CT

BlackArmor® Carbon/PEEK pedicle screws and titanium rods



## VADER® Pedicle Screws

Description	Diameter	Length	Increments	Reference number
Screws, made of BlackArmor® Carbon/PEEK, polyaxial, cannulated, fenestrated	4.5 mm	25–50 mm	5 mm	16-6022-545xx
	5.5 mm	25–55 mm	5 mm	16-6022-555xx
	6.5 mm	30–60 mm	5 mm	16-6022-565xx
	7.5 mm	35–60 mm	5 mm	16-6022-575xx

## Cement Cannulas

Description	Packaging unit	Reference number
Cement Cannula	1 pc.	42-420

## BlackArmor® and Titanium Rods

Description	Curvature	Diameter	Radius	Length	Increments	Reference number
Rods, made of BlackArmor® Carbon/PEEK	Straight	6.0 mm	000	40–100 mm	10 mm	16-60-200xx
				120–160 mm	20 mm	
	Curved	6.0 mm	120	40–100 mm	10 mm	16-60-212xx
				120 mm	–	16-60-21212
			450	80–240 mm	20 mm	16-60-245xx
S-rods, made of BlackArmor® Carbon/PEEK, multi curved	Multi curved	6.0 mm	Multi curved	300 mm	5 types of S-rods	16-60-2MC30-x
Rods, made of titanium	Straight	6.0 mm	000	40–100 mm	10 mm	16-60-800xx
				120–200 mm	20 mm	
				250, 300, 400, 500 mm	–	

## Titanium Nut Screw

Description	For rod diameter	Reference number
Nut Screw, made of titanium	6.0 mm	16-57-41000


## Connectors

Description	Width/Dimensions	Reference number
Parallel Connector, Closed, made of BlackArmor® Carbon/PEEK	10 × 25 mm	16-6060-0225
Axial Connector, made of BlackArmor® Carbon/PEEK	12 × 26 mm	16-6060-0126
Cross-Links, made of titanium	30–34 mm	16-57-93034
	33–42 mm	16-57-93442
	40–53 mm	16-57-94053
	50–70 mm	16-57-95070

**NOTE:** The VADER® pedicle screws, the BlackArmor® rods, the titanium rods, and the titanium nut screws are suitable for open and minimally invasive surgery.

icotec ag

Contact in the USA:  
125 High Street  
Suite 220  
Boston, MA 02110  
United States  
Phone (860) 404-6999  
info@icotec-medical.com  
www.icotec-medical.com

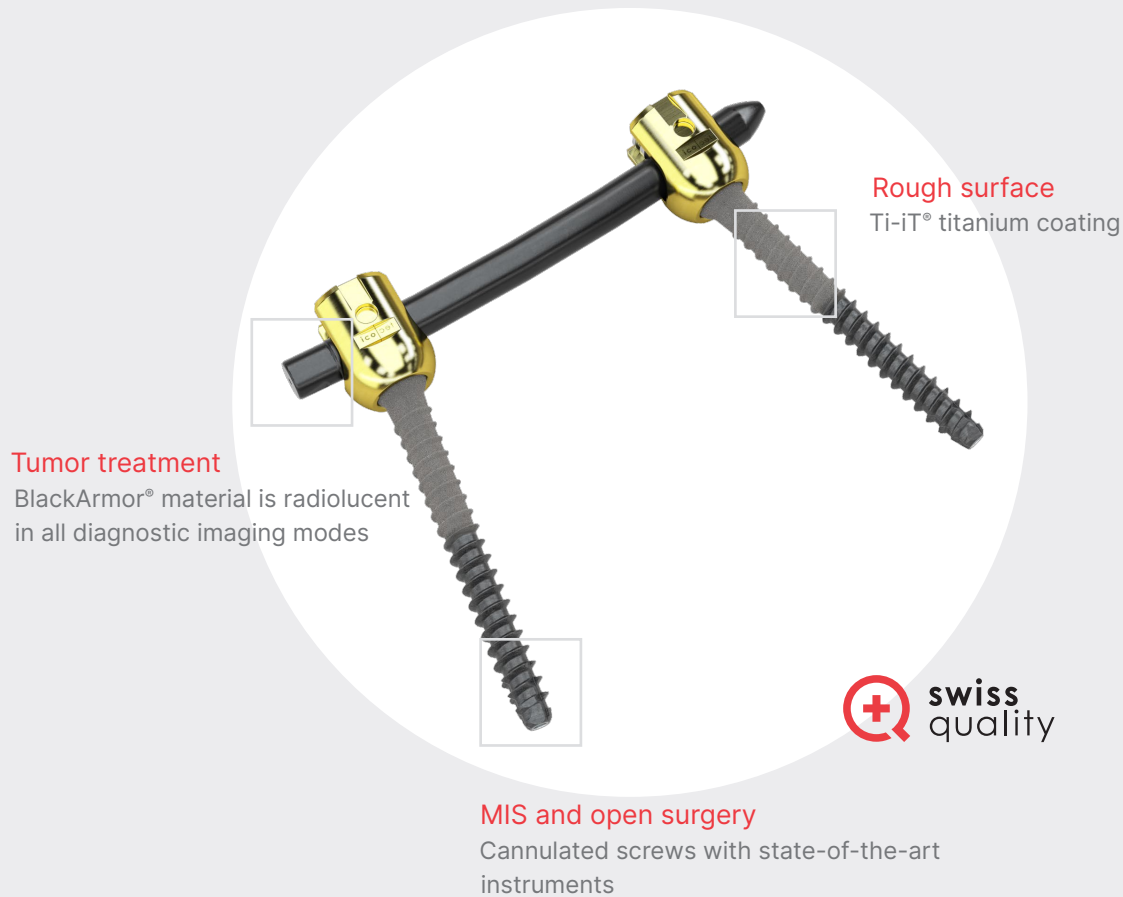
Information needed to use the device and a glossary of symbols that may appear on the product labeling and the meaning of the symbols are made available in electronic form; current and previous versions can be downloaded in electronic form at [ifu.icotec-medical.com](http://ifu.icotec-medical.com) (code = ) or can be requested by email or phone from icotec. On request, icotec will provide a paper version within seven calendar days at no charge. The electronic versions can be viewed with a freely available PDF reader (e.g., Adobe Acrobat Reader, which can be downloaded at [www.adobe.com](http://www.adobe.com)).



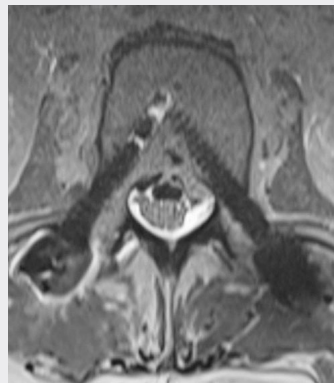
ifu.icotec-medical.com  
Code = 

FACTSHEET

# VADER<sup>®</sup>one Pedicle System



**X-ray**  
BlackArmor<sup>®</sup> Carbon/PEEK pedicle screws



**MRI**  
BlackArmor<sup>®</sup> Carbon/PEEK pedicle screws



**CT**  
BlackArmor<sup>®</sup> Carbon/PEEK pedicle screws and titanium rods



## VADER®one Pedicle Screws

Description	Diameter	Length	Increments	Reference number
Screws, made of BlackArmor® Carbon/PEEK, polyaxial, cannulated	5.5 mm	25–55 mm	5 mm	16-6023-555xx
	6.5 mm	30–60 mm	5 mm	16-6023-565xx
	7.5 mm	35–60 mm	5 mm	16-6023-575xx

## BlackArmor® and Titanium Rods

Description	Packaging unit	Curvature	Diameter	Radius	Length	Increments	Reference number
Rods, made of BlackArmor® Carbon/PEEK	1 pc.	Straight	6.0 mm	000	40–100 mm	10 mm	16-60-200xx
					120–160 mm	20 mm	
	1 pc.	Curved	6.0 mm	120	40–100 mm	10 mm	16-60-212xx
	1 pc.	Curved	6.0 mm	120	120 mm	–	16-60-21212
	1 pc.	Curved	6.0 mm	450	80–240 mm	20 mm	16-60-245xx
S-rods, made of BlackArmor® Carbon/PEEK, multi curved	1 pc.	Multi curved	6.0 mm	Multi curved	300 mm	5 types of S-rods	16-60-2MC30-x
Rods, made of titanium	2 pcs.	Straight	6.0 mm	000	40–100 mm	10 mm	16-60-800xx
					120–200 mm	20 mm	
					250, 300, 400, 500 mm	–	

## Titanium Nut Screw

Description	Packaging unit	For rod diameter	Reference number
Nut Screw, made of titanium	2 pcs.	6.0 mm	16-57-41000

## Connectors

Description	Width/Dimensions	Reference number
Parallel Connector, Closed, made of BlackArmor® Carbon/PEEK	10 × 25 mm	16-6060-0225
Axial Connector, made of BlackArmor® Carbon/PEEK	12 × 26 mm	16-6060-0126
Cross-Links, made of titanium	30–34 mm	16-57-93034
	33–42 mm	16-57-93442
	40–53 mm	16-57-94053
	50–70 mm	16-57-95070

**NOTE:** The VADER®one pedicle screws, the BlackArmor® rods, the titanium rods, and the titanium nut screws are suitable for open and minimally invasive surgery.

icotec ag

Contact in the USA:

125 High Street

Suite 220

Boston, MA 02110

United States

Phone (860) 404-6999

info@icotec-medical.com

www.icotec-medical.com

