

FACTSHEET

KONG[®]-C VBR System

Tooth profile
For the primary fixation stability of the VBR

Rough surface
Ti-iT[®] titanium coating

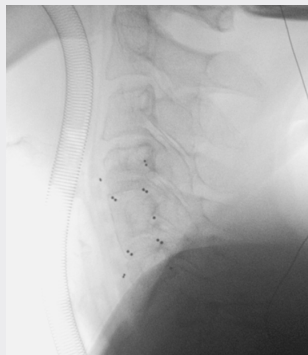
Lordotic curvature of the body
Adapted to the anatomy

Tumor treatment
Nonmetallic BlackArmor[®] material produces minimal artifacts and eliminates shielding or scattering of radiation

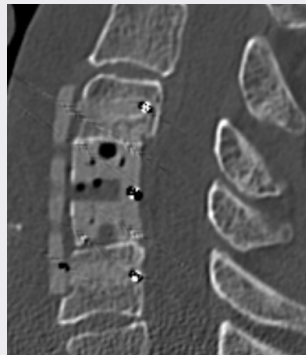
Modular implant
Adjustment to the patients' anatomy through various body heights, footprints and angles of end plates

Large footprint
Large contact surface of the end plates to reduce the risk of migration

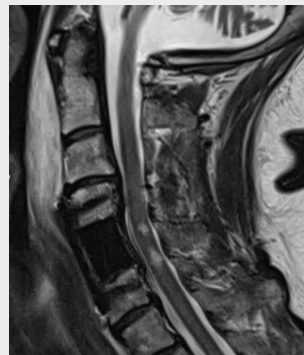
 **swiss quality**



Intraoperative X-ray, lateral view
Radiological visibility of KONG[®]-C VBR M and icotec Anterior Cervical Plate



Postoperative CT, lateral view
Reduced artifacts with KONG[®]-C VBR M and icotec Anterior Cervical Plate and showing ideal fit of the end plates



Postoperative MRI, sagittal view
Accurate diagnostic assessment with KONG[®]-C VBR M and icotec Anterior Cervical Plate showing complete decompression



KONG®-C VBR M Bodies

Description	Diameter	Total height incl. end plates	Increments	Reference number
Bodies, made of BlackArmor® Carbon/PEEK	13 mm	16–66 mm	2 mm	12-80-13xx-0

KONG®-C VBR End Plates

Description	Size	Height	Angle*	Reference number
End Plates and Screws (one Screw per End Plate), made of BlackArmor® Carbon/PEEK	14 × 13 mm	5.5 mm	0°	12-80-001413
	16 × 13 mm	5.5 mm	0°	12-80-001613
	18 × 14 mm	5.5 mm	0°	12-80-001814
	14 × 13 mm	5.5 mm	3°	12-80-301413
	16 × 13 mm	5.5 mm	3°	12-80-301613
	18 × 14 mm	5.5 mm	3°	12-80-301814
	14 × 13 mm	5.5 mm	6°	12-80-601413
	16 × 13 mm	5.5 mm	6°	12-80-601613
	18 × 14 mm	5.5 mm	6°	12-80-601814

* The angles of the end plates do not influence the implant height.

KONG®-C VBR Screw

Description	Size	Length	Reference number
Screw, made of BlackArmor® Carbon/PEEK	M6	7 mm	12-80-00607

icotec ag

Contact in the USA:
 125 High Street
 Suite 220
 Boston, MA 02110
 United States
 Phone (860) 404-6999
 info@icotec-medical.com
 www.icotec-medical.com

Information needed to use the device and a glossary of symbols that may appear on the product labeling and the meaning of the symbols are made available in electronic form; current and previous versions can be downloaded in electronic form at ifu.icotec-medical.com (code = REF) or can be requested by email or phone from icotec. On request, icotec will provide a paper version within seven calendar days at no charge. The electronic versions can be viewed with a freely available PDF reader (e.g., Adobe Acrobat Reader, which can be downloaded at www.adobe.com).



ifu.icotec-medical.com
 Code = REF