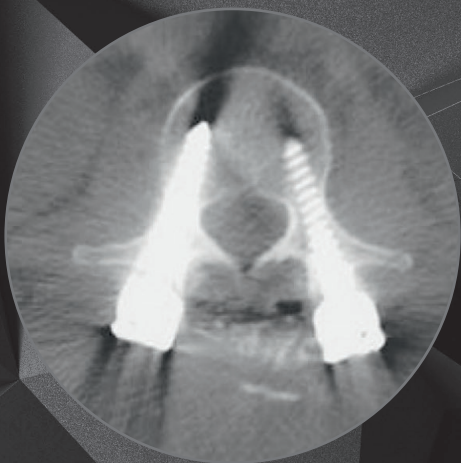


# Remove Barriers for True Insights



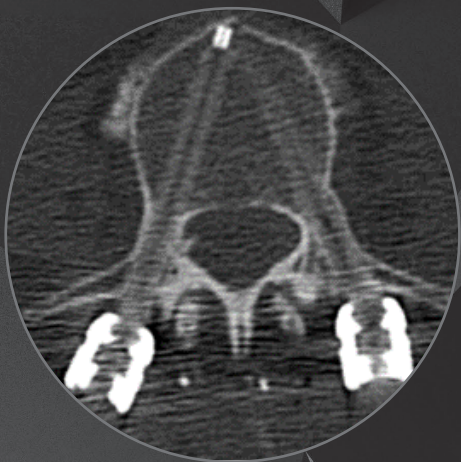
---

When you use titanium

---

When you use BlackArmor®

---





Engineered and  
manufactured by icotec  
in Switzerland



ico | cœt

**icotec ag**

*Contact in the USA:*

125 High Street

Suite 220

Boston, MA 02110

United States

Phone: (860) 404-6999

[info@icotec-medical.com](mailto:info@icotec-medical.com)

[www.icotec-medical.com](http://www.icotec-medical.com)



High-strength, nonmetallic  
biomaterial for load-bearing  
implant applications



Technical Information

**BlackArmor® Material**  
from the leader in medical  
Carbon/PEEK composites

# BlackArmor® Composite Material Technology

- High-performance composite material through utilization of endless carbon fibers in a PEEK matrix
- Interwoven 3D fiber architecture throughout the implant
- Radiolucent in all diagnostic imaging modes (X-ray, CT, MRI)
- Embedded tantalum markers ensure the required radiologic visibility of the implants during surgery and follow-up





# BlackArmor® Material

Engineered and manufactured by icotec



**BLACK®  
ARMOR**

# A Million Carbon Fibers

- Carbon fibers are the backbone of modern high-tech composites
- Aircrafts are getting lighter, yet stay strong and safe
- Formula 1 drivers are well protected by the strength of carbon fibers



## icotec Technology

- Injection Molding CFM (Composite Flow Molding), a manufacturing process originally developed by icotec in 2000
- Carbon/PEEK biomaterial with interwoven 3D fiber architecture throughout the implant





## Musculoskeletal Applications

- icotec's BlackArmor® composite material has been implanted in more than 20,000 cases in spine care
- Secure stabilization of the musculoskeletal system in load-bearing applications and an alternative to metal
- BlackArmor® is radiolucent in all clinical imaging techniques (X-ray, CT, MRI)
- BlackArmor® biomaterial facilitates radiation therapy by enabling accurate delineation of anatomic structures during planning, correct dose calculation and unimpeded radiation application into the target tissue