

TUMOR TREATMENT

Enhanced postoperative radiation planning, therapy and follow-up with radiolucent BlackArmor® Carbon/PEEK material

PRECONTOURED PLATES

Adapted to patient's anatomy with a cervical lordosis



IMPLANT MADE OF BLACKARMOR® CARBON/PEEK

Reduced artifacts in postoperative imaging procedures

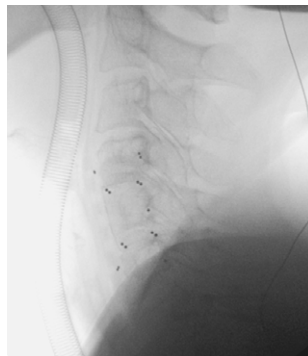
FIXED-ANGLE SCREWS

Screw angulation prevents screw penetration through end plates

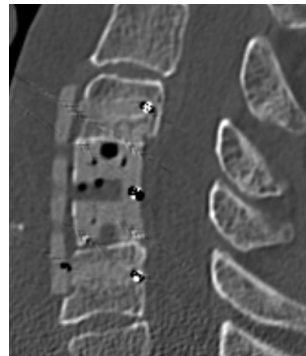
inspired by nature – built by icotec

ICOTEC ANTERIOR CERVICAL PLATE

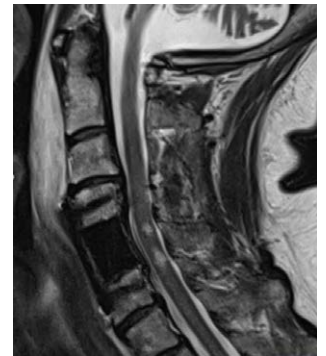
Factsheet



Intraoperative X-ray, lateral view
icotec Anterior Cervical Plate with four screws and KONG®-C VBR M



Postoperative CT, lateral view
icotec Anterior Cervical Plate and KONG®-C VBR M showing ideal fit of the end plates



Postoperative MRI, sagittal view
icotec Anterior Cervical Plate and KONG®-C VBR M showing complete decompression

ICOTEC ANTERIOR CERVICAL PLATE

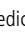
icotec Anterior Cervical Plates

– ALL IMPLANTS ARE STERILE PACKED –

Description	Width	Length	Lordotic curvature	Reference number
Anterior Cervical Plate, 1-Segmental	18 mm	21 mm	6°	12-70-18-21
		23 mm	7°	12-70-18-23
		25 mm	7°	12-70-18-25
		28 mm	8°	12-70-18-28
Anterior Cervical Plate, 2-Segmental	18 mm	38 mm	11°	12-70-18-38
		40 mm	12°	12-70-18-40
		43 mm	12°	12-70-18-43
		45 mm	13°	12-70-18-45
Anterior Cervical Plate, 3-Segmental	18 mm	55 mm	13°	12-73-18-55
		58 mm	13°	12-73-18-58
		61 mm	14°	12-73-18-61
		64 mm	15°	12-73-18-64
		67 mm	15°	12-73-18-67
		70 mm	16°	12-73-18-70
		73 mm	17°	12-73-18-73
		76 mm	17°	12-73-18-76
Anterior Cervical Plate, 4-Segmental	18 mm	79 mm	18°	12-73-18-79
		70 mm	16°	12-74-18-70
		74 mm	17°	12-74-18-74
		78 mm	18°	12-74-18-78
		82 mm	19°	12-74-18-82
		86 mm	20°	12-74-18-86
		90 mm	20°	12-74-18-90
		94 mm	22°	12-74-18-94

Screws

Description	Diameter	Length	Reference number
Screw, self-tapping	4.0 mm	13 mm	12-70-40-133
		15 mm	12-70-40-153
Emergency Screw, self-tapping	4.25 mm	13 mm	12-70-42-133
		15 mm	12-70-42-153

Information needed to use the device and a glossary of symbols that may appear on the product labeling and the meaning of the symbols are made available in electronic form; current and previous versions can be downloaded in electronic form at ifu.icotec-medical.com (code = ) or can be requested by email or phone from icotec. On request, icotec will provide a paper version within seven calendar days at no charge. The electronic versions can be viewed with a freely available PDF reader (e.g., Adobe Acrobat Reader, which can be downloaded at www.adobe.com).



ifu.icotec-medical.com

ico | cœt



 icotec ag

icotec Medical GmbH
In der Au 25
61440 Oberursel
Germany

Industriestrasse 12
9450 Altstätten
Switzerland
Phone: +41 71 757 00 00
Fax: +41 71 757 00 01
info@icotec.ch
www.icotec-medical.com

CE 0297