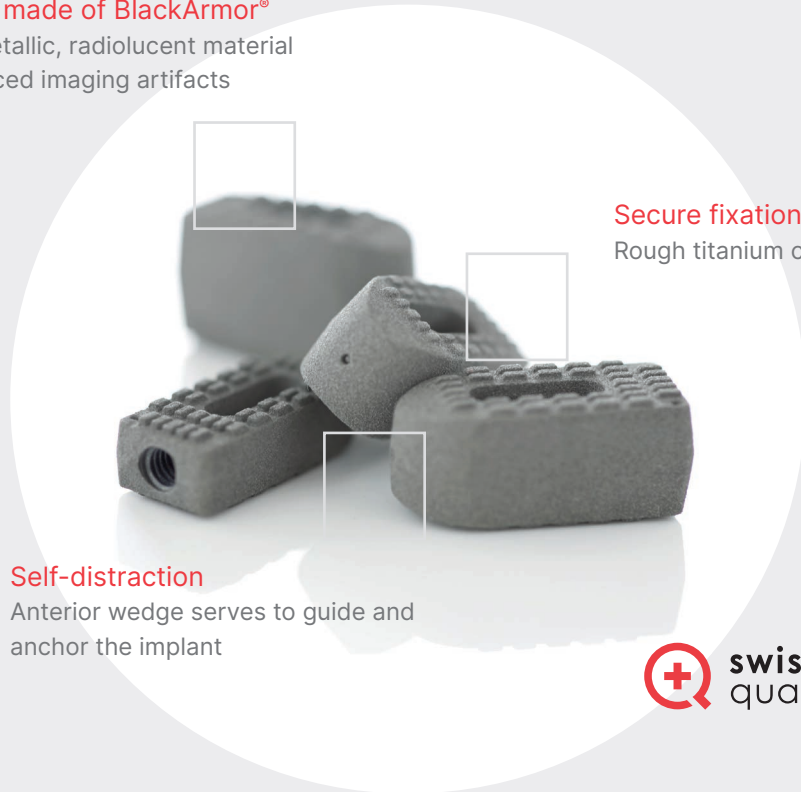


FACTSHEET

icotec PLIF Cage

Implant made of BlackArmor®

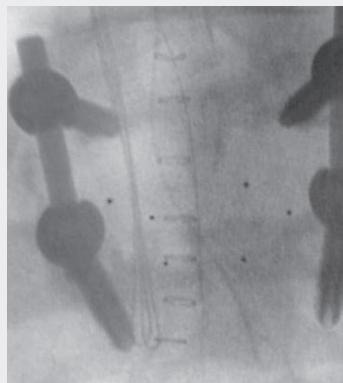
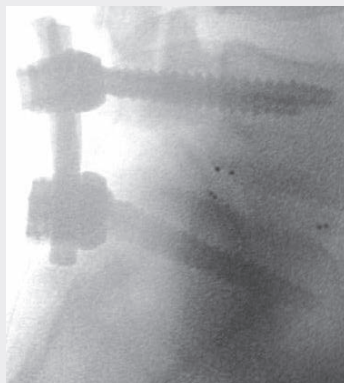
A nonmetallic, radiolucent material for reduced imaging artifacts



Secure fixation to bone
Rough titanium coating

Self-distraction

Anterior wedge serves to guide and anchor the implant



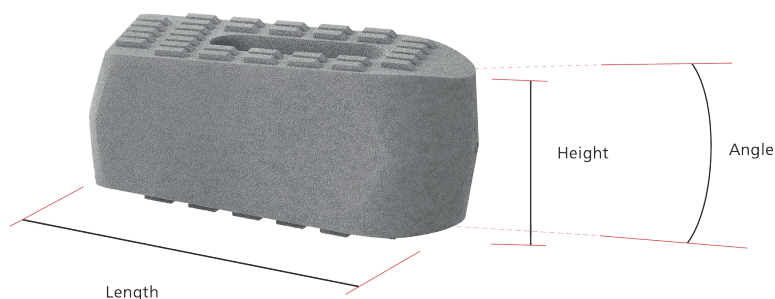
Outstanding imaging quality
Focused on bone – not metal



icotec PLIF Cages

Description	Angle	Length	Height	Reference number
icotec PLIF Cage	0°	25 mm	7 mm	12-59-02507* 13-59-02507
			9 mm	12-59-02509* 13-59-02509
			11 mm	12-59-02511* 13-59-02511
			13 mm	12-59-02513* 13-59-02513
			15 mm	12-59-02515* 13-59-02515
icotec PLIF Cage	4°	25 mm	7 mm	12-59-42507* 13-59-42507
			9 mm	12-59-42509* 13-59-42509
			11 mm	12-59-42511* 13-59-42511
			13 mm	12-59-42513* 13-59-42513
			15 mm	12-59-42515* 13-59-42515
icotec PLIF Cage	8°	25 mm	9 mm	12-59-82509* 13-59-82509
			11 mm	12-59-82511* 13-59-82511
			13 mm	12-59-82513* 13-59-82513
			15 mm	12-59-82515* 13-59-82515

* New reference number as of 03/2024 (without any modification to the implant).



icotec ag

Contact in the USA:
 222 Pitkin Street
 East Hartford CT 06108
 United States
 Phone (860) 404-6999
 info@icotec-medical.com
 www.icotec-medical.com

Information needed to use the device and a glossary of symbols that may appear on the product labeling and the meaning of the symbols are made available in electronic form; current and previous versions can be downloaded in electronic form at ifu.icotec-medical.com (code = REF) or can be requested by email or phone from icotec. On request, icotec will provide a paper version within seven calendar days at no charge. The electronic versions can be viewed with a freely available PDF reader (e.g., Adobe Acrobat Reader, which can be downloaded at www.adobe.com).



ifu.icotec-medical.com
 Code = REF