

## SELF-DISTRACTION

Anterior wedge serves to guide the implant

## IMPLANT MADE OF BLACKARMOR®

Reduced artifacts in postoperative imaging procedures<sup>(1)</sup>

## ROUGH Ti-iT® TITANIUM COATING

Osseoconductive surface results in improved bone ongrowth apposition<sup>(2)</sup>

## GRAFT WINDOW

Allows fusion through the cage

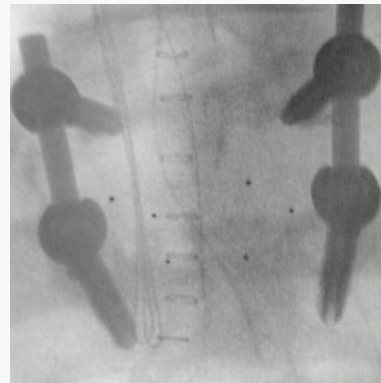
## INTEGRATED RIDGES

Enhancing guidance and primary stability

inspired by nature – built by icotec

## ICOTEC PLIF CAGE

Factsheet



## OUTSTANDING IMAGING QUALITY

focused on bone – not metal

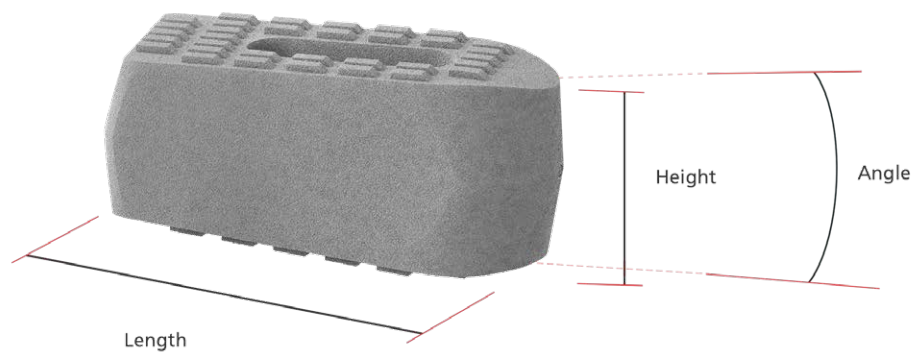


Carbon/PEEK implant material from icotec


# ICOTEC PLIF CAGE

## icotec PLIF Cages

Description	Angle	Length	Height	Reference number
icotec PLIF Cage	0°	25 mm	7 mm	12-59-02507
			9 mm	12-59-02509
			11 mm	12-59-02511
			13 mm	12-59-02513
			15 mm	12-59-02515
icotec PLIF Cage	4°	25 mm	7 mm	12-59-42507
			9 mm	12-59-42509
			11 mm	12-59-42511
			13 mm	12-59-42513
			15 mm	12-59-42515
icotec PLIF Cage	8°	25 mm	9 mm	12-59-82509
			11 mm	12-59-82511
			13 mm	12-59-82513
			15 mm	12-59-82515



1. Ringel (2017): Radiolucent Carbon Fiber-Reinforced Pedicle Screws for the Treatment of Spinal Tumors: Advantages for Radiation Planning and Follow-Up Imaging. *World Neurosurgery*.
2. Hoppe (2018): First Results of a New Vacuum Plasma Sprayed (VPS) Titanium-Coated Carbon/PEEK Composite Cage for Lumbar Interbody Fusion. *Journal of Functional Biomaterials*.

Information needed to use the device and a glossary of symbols that may appear on the product labeling and the meaning of the symbols are made available in electronic form; current and previous versions can be downloaded in electronic form at [ifu.icotec-medical.com](http://ifu.icotec-medical.com) (code = ) or can be requested by email or phone from icotec. On request, icotec will provide a paper version within seven calendar days at no charge. The electronic versions can be viewed with a freely available PDF reader (e.g., Adobe Acrobat Reader, which can be downloaded at [www.adobe.com](http://www.adobe.com)).



[ifu.icotec-medical.com](http://ifu.icotec-medical.com)

ico | cœt



icotec Medical GmbH  
In der Au 25  
61440 Oberursel  
Germany

 icotec ag

Industriestrasse 12  
9450 Altstätten  
Switzerland  
Phone: +41 71 757 00 00  
Fax: +41 71 757 00 01  
info@icotec.ch  
[www.icotec-medical.com](http://www.icotec-medical.com)

CE 0297