

FLEXIBLE POSITIONING OF END PLATES

For a variety of different surgical approaches

OSSEOCONDUCTIVE SURFACE

Rough Ti-iT® titanium coating

TUMOR TREATMENT

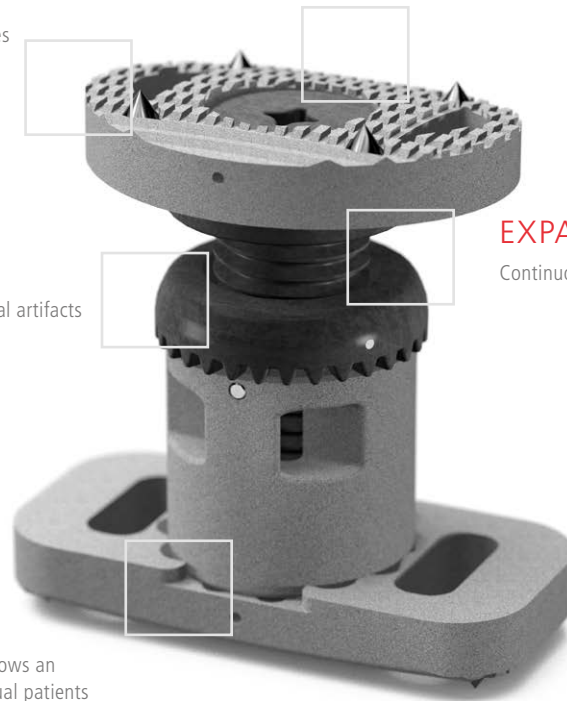
Nonmetallic BlackArmor® material produces minimal artifacts and eliminates shielding or scattering of radiation

EXPANDABLE IMPLANT

Continuous expansion

MODULAR IMPLANT

A variety of main bodies and end plates allows an adaption to the unique anatomy of individual patients



inspired by nature – built by icotec

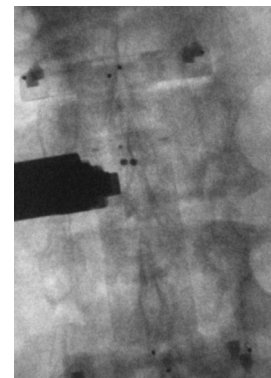
KONG®-TL VBR E

Factsheet



X-ray, lateral view

BlackArmor® Carbon/PEEK KONG®-TL VBR E (incl. extension) with titanium pins, spikes, and locking screw as well as tantalum markers



X-ray, AP view

BlackArmor® Carbon/PEEK KONG®-TL VBR E with titanium pins, spikes, and tantalum markers, attached to the inserter

KONG[®]-TL VBR E

KONG[®]-TL VBR E Expandable Bodies

Description	Type/size	Diameter	Height	Reference number
Bodies, made of BlackArmor [®] Carbon/ PEEK, expandable, integrated End Plate	Standalone, XXS	19 mm	19–23 mm	12-91-1919-9
	Standalone, XS	19 mm	22–29 mm	12-91-1922-9

Description	Type/size	Diameter	Height	Reference number
Bodies, made of BlackArmor [®] Carbon/ PEEK, expandable	S	19 mm	20–24 mm	12-90-1920-9
	M	19 mm	23–30 mm	12-90-1923-9
	L	19 mm	27–37 mm	12-90-1927-9
	XL	19 mm	33–49 mm	12-90-1933-9

KONG[®]-TL VBR E Extensions


Description	Type/size	Diameter	Height	Reference number
Extensions and Screws (one Screw per Extension), made of BlackArmor [®] Carbon/ PEEK	S	19 mm	20 mm	12-90-1920-0
	M	19 mm	35 mm	12-90-1935-0

KONG[®]-TL VBR E End Plates

Description	Type/size	Angle	Length	Width	Reference number
End Plates, round, and Screws (one Screw per End Plate), made of BlackArmor [®] Carbon/PEEK	S	0°	26 mm	20 mm	12-90-0026
	S	4°	26 mm	20 mm	12-90-0426
	S	8°	26 mm	20 mm	12-90-0826
	M	0°	33 mm	25 mm	12-90-0033
	M	4°	33 mm	25 mm	12-90-0433
	M	8°	33 mm	25 mm	12-90-0833
	L	0°	43 mm	29 mm	12-90-0043
	L	4°	43 mm	29 mm	12-90-0443
	L	8°	43 mm	29 mm	12-90-0843
End Plates, rectangular, and Screws (one Screw per End Plate), made of BlackArmor [®] Carbon/ PEEK	M	0°	33 mm	20 mm	12-90-003320
	M	4°	33 mm	20 mm	12-90-043320
	M	8°	33 mm	20 mm	12-90-083320
	L	0°	43 mm	20 mm	12-90-004320
	L	4°	43 mm	20 mm	12-90-044320
	L	8°	43 mm	20 mm	12-90-084320
	XL	0°	52 mm	20 mm	12-90-005220
	XL	4°	52 mm	20 mm	12-90-045220
	XL	8°	52 mm	20 mm	12-90-085220

KONG[®]-TL VBR E Screw

Description	Type/size	Length	Reference number
Screw, made of BlackArmor [®] Carbon/ PEEK	M8	6 mm	12-90-00806

Information needed to use the device and a glossary of symbols that may appear on the product labeling and the meaning of the symbols are made available in electronic form; current and previous versions can be downloaded in electronic form at ifu.icotec-medical.com (code = ) or can be requested by email or phone from icotec. On request, icotec will provide a paper version within seven calendar days at no charge. The electronic versions can be viewed with a freely available PDF reader (e.g., Adobe Acrobat Reader, which can be downloaded at www.adobe.com).



ifu.icotec-medical.com

ico | cœt

 icotec ag

Industriestrasse 12
9450 Altstätten
Switzerland
Phone: +41 71 757 00 00
Fax: +41 71 757 00 01
info@icotec.ch
www.icotec-medical.com

CE 0297

Not available for sale within the United States.

0228EN-2020-05