

## TOOTH PROFILE

For the primary fixation stability of the VBR

## ROUGH SURFACE

Ti-iT® titanium coating

## TUMOR TREATMENT

Nonmetallic BlackArmor® material produces minimal artifacts and eliminates shielding or scattering of radiation

## LARGE FOOTPRINT

Large contact surface of the end plates to reduce the risk of migration



## LORDOTIC CURVATURE OF THE BODY

Adapted to the anatomy

## MODULAR IMPLANT

Adjustment to the patients' anatomy through various body heights, footprints and angles of end plates

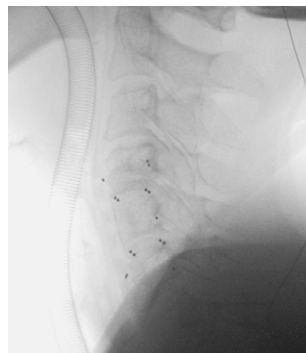
inspired by nature – built by icotec

## KONG®-C VBR SYSTEM

Factsheet

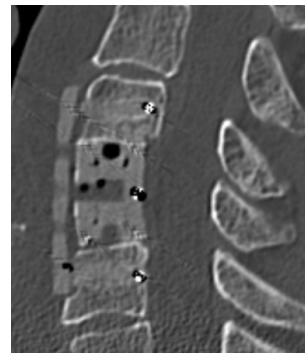


Carbon/PEEK implant material from icotec



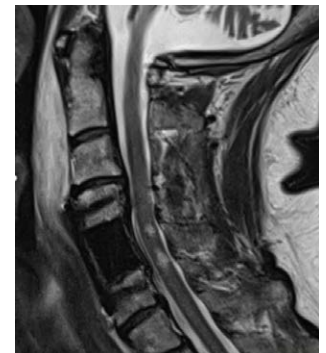
Intraoperative X-ray, lateral view

Radiological visibility of KONG®-C VBR M and icotec Anterior Cervical Plate



Postoperative CT, lateral view

Reduced artifacts with KONG®-C VBR M and icotec Anterior Cervical Plate and showing ideal fit of the end plates



Postoperative MRI, sagittal view

Accurate diagnostic assessment with KONG®-C VBR M and icotec Anterior Cervical Plate showing complete decompression

## KONG®-C VBR M Bodies

Description	Diameter	Total height incl. end plates	Increments	Reference number
Bodies, made of BlackArmor® Carbon/PEEK	13 mm	16–66 mm	2 mm	12-80-13xx-0

## KONG®-C VBR End Plates

Description	Size	Height	Angle*	Reference number
End Plates and Screws (one Screw per End Plate), made of BlackArmor® Carbon/PEEK	14 × 13 mm	5.5 mm	0°	12-80-001413
	16 × 13 mm	5.5 mm	0°	12-80-001613
	18 × 14 mm	5.5 mm	0°	12-80-001814
	14 × 13 mm	5.5 mm	3°	12-80-301413
	16 × 13 mm	5.5 mm	3°	12-80-301613
	18 × 14 mm	5.5 mm	3°	12-80-301814
	14 × 13 mm	5.5 mm	6°	12-80-601413
	16 × 13 mm	5.5 mm	6°	12-80-601613
	18 × 14 mm	5.5 mm	6°	12-80-601814

\* The angles of the end plates do not influence the implant height.

## KONG®-C VBR Screw

Description	Size	Length	Reference number
Screw, made of BlackArmor® Carbon/PEEK	M6	7 mm	12-80-00607

Information needed to use the device and a glossary of symbols that may appear on the product labeling and the meaning of the symbols are made available in electronic form; current and previous versions can be downloaded in electronic form at [ifu.icotec-medical.com](http://ifu.icotec-medical.com) (code = [REF](#)) or can be requested by email or phone from icotec. On request, icotec will provide a paper version within seven calendar days at no charge. The electronic versions can be viewed with a freely available PDF reader (e.g., Adobe Acrobat Reader, which can be downloaded at [www.adobe.com](http://www.adobe.com)).



[ifu.icotec-medical.com](http://ifu.icotec-medical.com)