

TOOTH PROFILE

For the primary fixation stability of the VBR

OSSEOCONDUCTIVE SURFACE

Rough Ti-iT[®] titanium coating, except on the posterior aspect to prevent dura irritation

LORDOTIC CURVATURE OF THE BODY

Adapted to the anatomy

TUMOR TREATMENT

Nonmetallic BlackArmor[®] material produces minimal artifacts and eliminates shielding or scattering of radiation

MODULAR IMPLANT

Adjustment to the patients' anatomy through various body heights, footprints and angles of end plates

LARGE FOOTPRINT

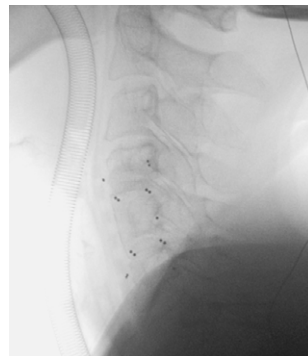
Large contact surface of the end plates to reduce the risk of migration and subsidence



inspired by nature – built by icotec

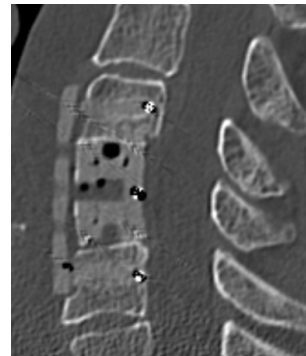
KONG[®]-C VBR SYSTEM

Factsheet



Intraoperative X-ray, lateral view

Radiological visibility of KONG[®]-C VBR M and icotec Anterior Cervical Plate



Postoperative CT, lateral view

Reduced artifacts with KONG[®]-C VBR M and icotec Anterior Cervical Plate and showing ideal fit of the end plates



Postoperative MRI, sagittal view

Accurate diagnostic assessment with KONG[®]-C VBR M and icotec Anterior Cervical Plate showing complete decompression

KONG[®]-C VBR SYSTEM

– ALL IMPLANTS ARE STERILE PACKED –

KONG[®]-C VBR M Bodies

Description	Diameter	Total height incl. end plates	Increments	Reference number
Bodies, made of BlackArmor [®] Carbon/ PEEK	13 mm	16–66 mm	2 mm	12-80-13xx-0

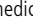
KONG[®]-C VBR End Plates

Description	Size	Height	Angle*	Reference number
End Plates and Screws (one Screw per End Plate), made of BlackArmor [®] Carbon/PEEK	14 × 13 mm	5.5 mm	0°	12-80-001413
	16 × 13 mm	5.5 mm	0°	12-80-001613
	18 × 14 mm	5.5 mm	0°	12-80-001814
	14 × 13 mm	5.5 mm	3°	12-80-301413
	16 × 13 mm	5.5 mm	3°	12-80-301613
	18 × 14 mm	5.5 mm	3°	12-80-301814
	14 × 13 mm	5.5 mm	6°	12-80-601413
	16 × 13 mm	5.5 mm	6°	12-80-601613
	18 × 14 mm	5.5 mm	6°	12-80-601814

* The angles of the end plates do not influence the implant height.

KONG[®]-C VBR Screw

Description	Size	Length	Reference number
Screw, made of BlackArmor [®] Carbon/ PEEK	M6	7 mm	12-80-00607

Information needed to use the device and a glossary of symbols that may appear on the product labeling and the meaning of the symbols are made available in electronic form; current and previous versions can be downloaded in electronic form at ifu.icotec-medical.com (code = ) or can be requested by email or phone from icotec. On request, icotec will provide a paper version within seven calendar days at no charge. The electronic versions can be viewed with a freely available PDF reader (e.g., Adobe Acrobat Reader, which can be downloaded at www.adobe.com).



ifu.icotec-medical.com

ico | c o e t



icotec ag

icotec Medical GmbH
In der Au 25
61440 Oberursel
Germany

Industriestrasse 12
9450 Altstätten
Switzerland
Phone: +41 71 757 00 00
Fax: +41 71 757 00 01
info@icotec.ch
www.icotec-medical.com

CE 0297