

TOOTH PROFILE

For the primary fixation stability of the VBR

OSSEOCONDUCTIVE SURFACE

Rough Ti-iT® titanium coating, except on the posterior aspect to prevent dura irritation

LORDOTIC CURVATURE OF THE BODY

Adapted to the anatomy

TUMOR TREATMENT

Nonmetallic BlackArmor® material produces minimal artifacts and eliminates shielding or scattering of radiation



MODULAR IMPLANT

Adjustment to the patients' anatomy through various body heights, footprints and angles of end plates

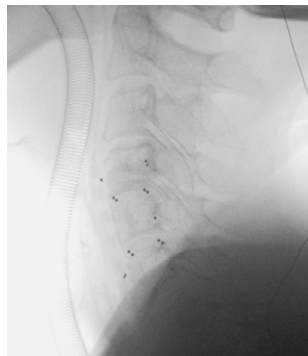
LARGE FOOTPRINT

Large contact surface of the end plates to reduce the risk of migration and subsidence

inspired by nature – built by icotec

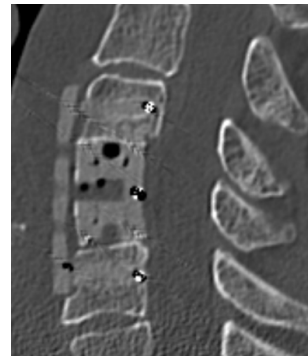
KONG®-C VBR SYSTEM

Factsheet



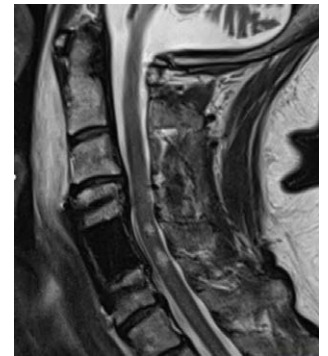
Intraoperative X-ray, lateral view

Radiological visibility of KONG®-C VBR M and icotec Anterior Cervical Plate



Postoperative CT, lateral view

Reduced artifacts with KONG®-C VBR M and icotec Anterior Cervical Plate and showing ideal fit of the end plates



Postoperative MRI, sagittal view

Accurate diagnostic assessment with KONG®-C VBR M and icotec Anterior Cervical Plate showing complete decompression

KONG[®]-C VBR SYSTEM

– ALL IMPLANTS ARE STERILE PACKED –

KONG[®]-C VBR M Bodies

| Description | Diameter | Total height incl. end plates | Increments | Reference number |
|--|----------|-------------------------------|------------|------------------|
| Bodies, made of BlackArmor [®] Carbon/ PEEK | 13 mm | 16–66 mm | 2 mm | 12-80-13xx-0 |

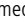
KONG[®]-C VBR End Plates

| Description | Size | Height | Angle* | Reference number |
|--|------------|--------|--------|------------------|
| End Plates and Screws (one Screw per End Plate), made of BlackArmor [®] Carbon/PEEK | 14 × 13 mm | 5.5 mm | 0° | 12-80-001413 |
| | 16 × 13 mm | 5.5 mm | 0° | 12-80-001613 |
| | 18 × 14 mm | 5.5 mm | 0° | 12-80-001814 |
| | 14 × 13 mm | 5.5 mm | 3° | 12-80-301413 |
| | 16 × 13 mm | 5.5 mm | 3° | 12-80-301613 |
| | 18 × 14 mm | 5.5 mm | 3° | 12-80-301814 |
| | 14 × 13 mm | 5.5 mm | 6° | 12-80-601413 |
| | 16 × 13 mm | 5.5 mm | 6° | 12-80-601613 |
| | 18 × 14 mm | 5.5 mm | 6° | 12-80-601814 |

* The angles of the end plates do not influence the implant height.

KONG[®]-C VBR Screw

| Description | Size | Length | Reference number |
|---|------|--------|------------------|
| Screw, made of BlackArmor [®] Carbon/ PEEK | M6 | 7 mm | 12-80-00607 |

Information needed to use the device and a glossary of symbols that may appear on the product labeling and the meaning of the symbols are made available in electronic form; current and previous versions can be downloaded in electronic form at ifu.icotec-medical.com (code = ) or can be requested by email or phone from icotec. On request, icotec will provide a paper version within seven calendar days at no charge. The electronic versions can be viewed with a freely available PDF reader (e.g., Adobe Acrobat Reader, which can be downloaded at www.adobe.com).



ifu.icotec-medical.com

ico | c o t e t

 icotec ag

Industriestrasse 12
9450 Altstätten
Switzerland
Phone: +41 71 757 00 00
Fax: +41 71 757 00 01
info@icotec.ch
www.icotec-medical.com

CE 0297

Not available for sale within the United States.

0229EN_2021-03