

ROUGH SURFACE

Ti-iT® titanium coating

TUMOR TREATMENT

BlackArmor® material is radiolucent in all diagnostic imaging modes

MIS AND OPEN SURGERY

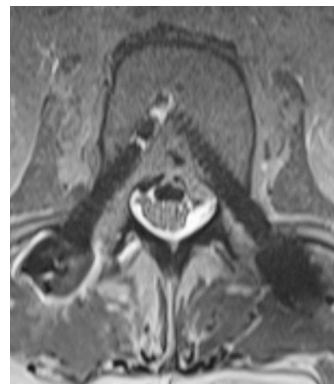
Cannulated screws with state-of-the-art instruments

inspired by nature – built by icotec

VADER® ONE PEDICLE SYSTEM MIS / LIGHTMORE® PEDICLE SYSTEM 6.0 Factsheet



X-ray
BlackArmor® Carbon/PEEK pedicle screws



MRI
BlackArmor® Carbon/PEEK pedicle screws



CT
BlackArmor® Carbon/PEEK pedicle screws and titanium rods



Carbon/PEEK implant material from icotec

– ALL IMPLANTS ARE STERILE PACKED –

VADER®one Pedicle Screws

Description	Diameter	Length	Increments	Reference number
Screws, made of BlackArmor® Carbon/PEEK, polyaxial, cannulated	5.5 mm	25–55 mm	5 mm	16-6023-555xx
	6.5 mm	30–60 mm	5 mm	16-6023-565xx
	7.5 mm	35–60 mm	5 mm	16-6023-575xx

BlackArmor® MIS Rods

Description	Packaging unit	Curvature	Diameter	Radius	Length	Increments	Reference number
Rods, made of BlackArmor® Carbon/PEEK	2 pcs.	Straight	6.0 mm	000	40–100 mm	10 mm	16-60-700xx
		Straight	6.0 mm	000	120–160 mm	20 mm	16-60-700xx
		Curved	6.0 mm	120	40–100 mm	10 mm	16-60-712xx
		Curved	6.0 mm	450	100–160 mm	20 mm	16-60-745xx
J-rods, made of BlackArmor® Carbon/PEEK: combination of straight (radius = 000 mm) and curved (radius = 450 mm)	2 pcs.	Straight and curved	6.0 mm	000 and 450	50/100 mm	–	16-60-70510-9
					60/100 mm	–	16-60-70610-9

Titanium MIS Rods

Description	Packaging unit	Curvature	Diameter	Radius	Length	Increments	Reference number
Rods, made of titanium	2 pcs.	Straight	6.0 mm	000	40–100 mm	10 mm	16-60-800xx
					120–200 mm	20 mm	
					250, 300, 400, 500 mm	–	

Titanium Nut Screw

Description	Packaging unit	For rod diameter	Reference number
Nut Screw, made of titanium	2 pcs.	6.0 mm	16-57-41000

Titanium Cross-Links

Description	Width	Reference number
Cross-Links, made of titanium	30–34 mm	16-57-93034
	33–42 mm	16-57-93442
	40–53 mm	16-57-94053
	50–70 mm	16-57-95070

NOTE: The VADER®one pedicle screws, the BlackArmor® MIS rods, the titanium MIS rods and the titanium nut screws are suitable for open and minimally invasive surgery.

Information needed to use the device is made available in electronic form; current and previous versions can be downloaded in electronic form at ifu.icotec-medical.com (code = [REF](#)) or can be requested by email or phone from icotec. On request, icotec will provide a paper version within seven calendar days at no charge. The electronic versions can be viewed with a freely available PDF reader (e.g., Adobe Acrobat Reader, which can be downloaded at www.adobe.com).



ifu.icotec-medical.com

ico | cœt

icotec ag

Contact in the USA:

222 Pitkin Street, Suite 115 G
 East Hartford CT 06108
 United States
 Phone: (860) 652-5313
 Fax: (860) 454-0625
info@icotec-medical.com
www.icotec-medical.com