

RELIABLE SURGICAL TECHNIQUE

State-of-the-art, intuitive pedicle system

MUSCLE-SPARING APPROACH

Cannulated screws for paraspinous access

INTRAOPERATIVE FLEXIBILITY

Can be combined with Carbon/PEEK screws and rods made of titanium or Carbon/PEEK

TRAPEZOIDAL LOCKING MECHANISM

Form fit locking mechanism minimizes head splay and prevents cross threading of locking screw

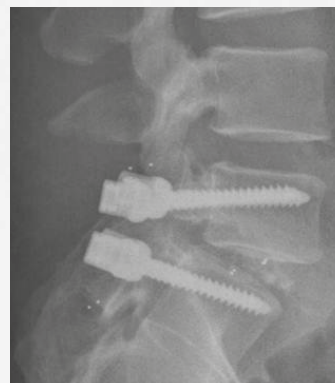
inspired by nature – built by icotec

ICOTEC PEDICLE SYSTEM TITANIUM

Factsheet



Screw with cannulation



Titanium pedicle screws with Carbon/PEEK rod and titanium-coated icotec ETurn® TLIF Cage

ICOTEC PEDICLE SYSTEM TITANIUM

Titanium Pedicle Screws

Description	Diameter	Length	Increments	Reference number
Screws, made of titanium, polyaxial, cannulated, sterile	5.5 mm	35–60 mm	5 mm	16-5721-455xx
	6.5 mm	35–60 mm	5 mm	16-5721-465xx
	7.5 mm	35–60 mm	5 mm	16-5721-475xx
Screws, made of titanium, polyaxial, cannulated, fenestrated, sterile	8.5 mm	35–60 mm	5 mm	16-5722-485xx
Screws, made of titanium, polyaxial, cannulated, fenestrated, sterile	8.5 mm	35–60 mm	5 mm	16-5722-985xx

BlackArmor® Rods

Description	Curvature	Diameter	Radius	Length	Increments	Reference number
Rods, made of BlackArmor® Carbon/PEEK	Straight	5.5 mm	000	30–150 mm	10 mm	16-55-000xx
	Curved	5.5 mm	120	30–100 mm	10 mm	16-55-012xx
	Curved	5.5 mm	450	100–160 mm	20 mm	16-55-045xx
J-rods, made of BlackArmor® Carbon/PEEK: combination of straight (radius = 000 mm) and curved (radius = 450 mm)	Straight and curved	5.5 mm	000 and 450	60/70 mm*	–	16-55-045xx
	Straight and curved	5.5 mm		50/100 mm	–	16-55-00510-9
	Straight and curved	5.5 mm		60/100 mm	–	16-55-00610-9
	* Available on request.					

Titanium Rods


Description	Curvature	Diameter	Radius	Length	Increments	Reference number
Rods, made of titanium, nonsterile	Straight	5.7 mm	000	40–100 mm	10 mm	16-57-400xx
				120–200 mm	20 mm	
				250–500 mm	50 mm	
Rods, made of titanium, sterile	Straight	5.7 mm	000	100–500 mm	100 mm	16-57-900xx
Rods, made of titanium, nonsterile	Curved	5.7 mm	120	40–100 mm	10 mm	16-57-412xx
				120–140 mm	20 mm	

Titanium Nut Screw

Description	For rod diameter	Reference number
Nut Screw, made of titanium, sterile	5.5 mm	16-57-41000
	5.7 mm	

Titanium Cross-Links

Description	Width	Reference number
Cross-Links, made of titanium, nonsterile	30–34 mm	16-57-3034
	33–42 mm	16-57-3442
	40–53 mm	16-57-4053
	50–70 mm	16-57-5070
Cross-Links, made of titanium, sterile	30–34 mm	16-57-93034
	33–42 mm	16-57-93442
	40–53 mm	16-57-94053
	50–70 mm	16-57-95070

Information needed to use the device and a glossary of symbols that may appear on the product labeling and the meaning of the symbols are made available in electronic form; current and previous versions can be downloaded in electronic form at ifu.icotec-medical.com (code = ) or can be requested by email or phone from icotec. On request, icotec will provide a paper version within seven calendar days at no charge. The electronic versions can be viewed with a freely available PDF reader (e.g., Adobe Acrobat Reader, which can be downloaded at www.adobe.com).



ifu.icotec-medical.com

ico | cœt



 icotec ag

icotec Medical GmbH
In der Au 25
61440 Oberursel
Germany

Industriestrasse 12
9450 Altstätten
Switzerland
Phone: +41 71 757 00 00
Fax: +41 71 757 00 01
info@icotec.ch
www.icotec-medical.com

CE 0297