

## SELF-DISTRACTION

Anterior wedge serves to guide and anchor the implant

## IMPLANT MADE OF BLACKARMOR®

A nonmetallic, radiolucent material for reduced imaging artifacts

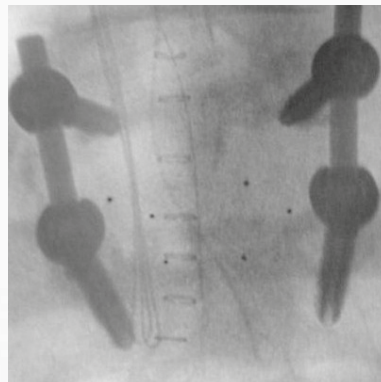
## SECURE FIXATION TO BONE

Rough titanium coating

inspired by nature – built by icotec

## ICOTEC PLIF CAGE

Factsheet



## OUTSTANDING IMAGING QUALITY

focused on bone – not metal

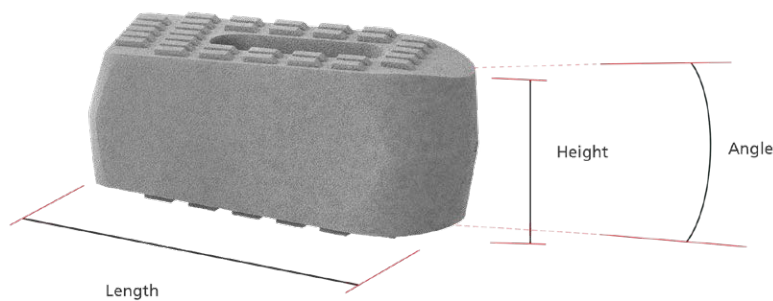


Carbon/PEEK implant material from icotec

# ICOTEC PLIF CAGE

## icotec PLIF Cages

Description	Angle	Length	Height	Reference number
icotec PLIF Cage	0°	25 mm	7 mm	13-59-02507
			9 mm	13-59-02509
			11 mm	13-59-02511
			13 mm	13-59-02513
			15 mm	13-59-02515
icotec PLIF Cage	4°	25 mm	7 mm	13-59-42507
			9 mm	13-59-42509
			11 mm	13-59-42511
			13 mm	13-59-42513
			15 mm	13-59-42515
icotec PLIF Cage	8°	25 mm	9 mm	13-59-82509
			11 mm	13-59-82511
			13 mm	13-59-82513
			15 mm	13-59-82515



Information needed to use the device is made available in electronic form; current and previous versions can be downloaded in electronic form at [ifu.icotec-medical.com](http://ifu.icotec-medical.com) (code = REF) or can be requested by email or phone from icotec. On request, icotec will provide a paper version within seven calendar days at no charge. The electronic versions can be viewed with a freely available PDF reader (e.g., Adobe Acrobat Reader, which can be downloaded at [www.adobe.com](http://www.adobe.com)).



[ifu.icotec-medical.com](http://ifu.icotec-medical.com)

ico | cœt

icotec ag

Contact in the USA:

222 Pitkin Street, Suite 115 G  
 East Hartford CT 06108  
 United States  
 Phone: (860) 652-5313  
 Fax: (860) 454-0625  
[info@icotec-medical.com](mailto:info@icotec-medical.com)  
[www.icotec-medical.com](http://www.icotec-medical.com)