

SELF-DISTRACTION

Anterior wedge serves to guide and anchor the implant

IMPLANT MADE OF BLACKARMOR®

A nonmetallic, radiolucent material for reduced imaging artifacts

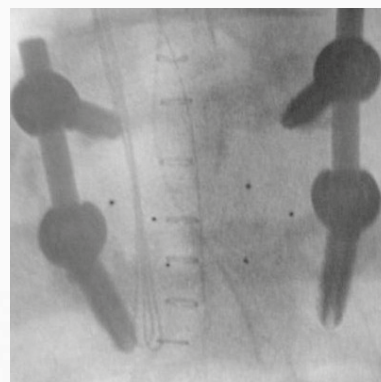
SECURE FIXATION TO BONE

Rough titanium coating

inspired by nature – built by icotec

ICOTEC PLIF CAGE

Factsheet



OUTSTANDING IMAGING QUALITY

focused on bone – not metal

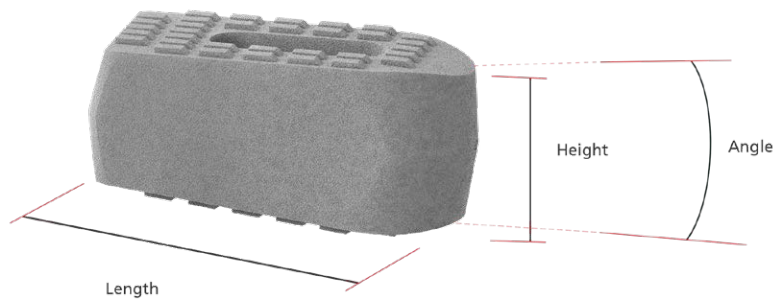


Carbon/PEEK implant material from icotec

ICOTEC PLIF CAGE

icotec PLIF Cages

Description	Angle	Length	Height	Reference number
icotec PLIF Cage	0°	25 mm	7 mm	13-59-02507
			8 mm	13-59-02508
			9 mm	13-59-02509
			10 mm	13-59-02510
			11 mm	13-59-02511
			12 mm	13-59-02512
			13 mm	13-59-02513
icotec PLIF Cage	4°	25 mm	14 mm	13-59-02514
			15 mm	13-59-02515
			7 mm	13-59-42507
			8 mm	13-59-42508
			9 mm	13-59-42509
			10 mm	13-59-42510
			11 mm	13-59-42511
icotec PLIF Cage	8°	25 mm	12 mm	13-59-42512
			13 mm	13-59-42513
			14 mm	13-59-42514
			15 mm	13-59-42515
			9 mm	13-59-82509
			10 mm	13-59-82510
			11 mm	13-59-82511



Information needed to use the device is made available in electronic form; current and previous versions can be downloaded in electronic form at ifu.icotec-medical.com (code = [REF](#)) or can be requested by email or phone from icotec. On request, icotec will provide a paper version within seven calendar days at no charge. The electronic versions can be viewed with a freely available PDF reader (e.g., Adobe Acrobat Reader, which can be downloaded at www.adobe.com).



ifu.icotec-medical.com

ico | cœt

 icotec ag

Industriestrasse 12
9450 Altstätten
Switzerland
Phone: +41 71 757 00 00
Fax: +41 71 757 00 01
info@icotec.ch
www.icotec-medical.com

0127US.2019-01