

SELF-DISTRACTION

Anterior wedge serves to guide and anchor the implant

IMPLANT MADE OF BLACKARMOR®

A nonmetallic, radiolucent material for reduced imaging artifacts

SECURE FIXATION TO BONE

Rough titanium coating

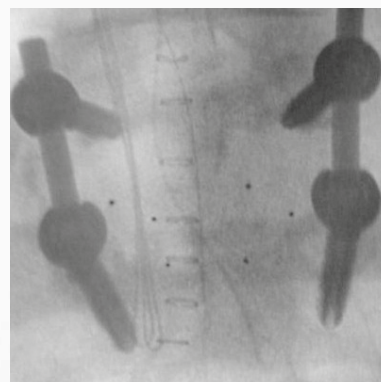
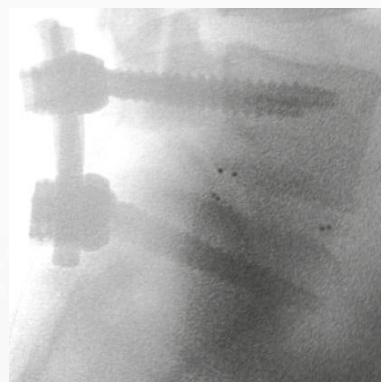
inspired by nature – built by icotec

ICOTEC PLIF CAGE

Factsheet



Carbon/PEEK implant material from icotec



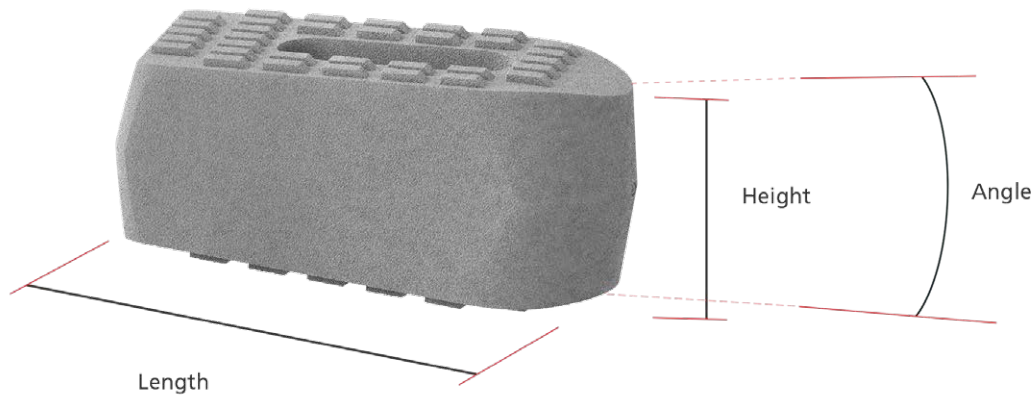
OUTSTANDING IMAGING QUALITY

focused on bone – not metal

ICOTEC PLIF CAGE

icotec PLIF Cages

Description	Angle	Length	Height	Reference number
icotec PLIF Cage	0°	25 mm	7 mm	13-59-02507
			8 mm	13-59-02508
			9 mm	13-59-02509
			10 mm	13-59-02510
			11 mm	13-59-02511
			12 mm	13-59-02512
			13 mm	13-59-02513
			14 mm	13-59-02514
icotec PLIF Cage	4°	25 mm	7 mm	13-59-42507
			8 mm	13-59-42508
			9 mm	13-59-42509
			10 mm	13-59-42510
			11 mm	13-59-42511
			12 mm	13-59-42512
			13 mm	13-59-42513
			14 mm	13-59-42514
icotec PLIF Cage	8°	25 mm	9 mm	13-59-82509
			10 mm	13-59-82510
			11 mm	13-59-82511
			12 mm	13-59-82512
			13 mm	13-59-82513
			14 mm	13-59-82514
			15 mm	13-59-82515



ico | cœt

 icotec ag

Industriestrasse 12
 9450 Altstätten
 Switzerland
 Phone: +41 71 757 00 00
 Fax: +41 71 757 00 01
 info@icotec.ch
 www.icotec-medical.com

0127US.2018-06