

SECURE FIXATION TO BONE

Rough titanium coating

SELF-DISTRACTION

The wedge and surface treads serve to guide and anchor the implant



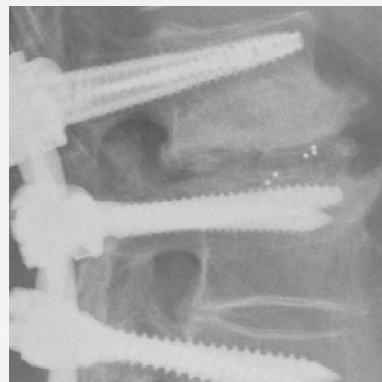
IMPLANT MADE OF BLACKARMOR®

A nonmetallic, radiolucent material
for reduced imaging artifacts

inspired by nature – built by icotec

ICOTEC ETURN® TLIF CAGE

Factsheet



Carbon/PEEK implant material from icotec

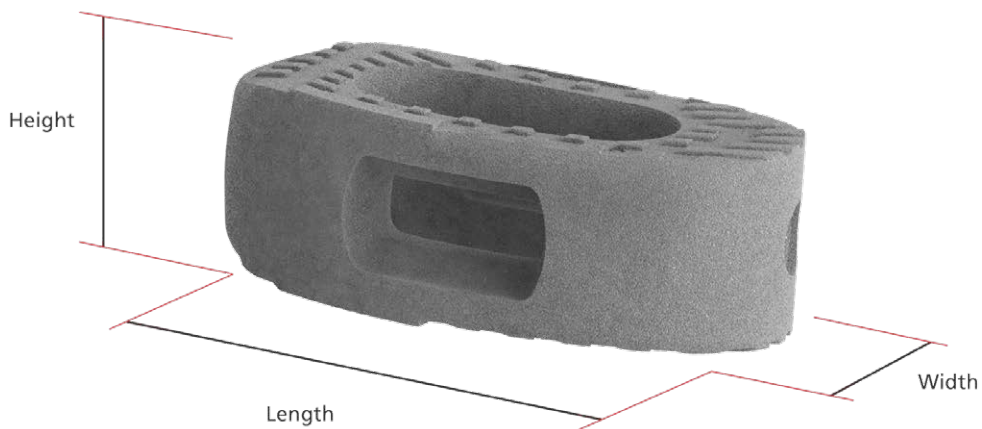
EXCELLENT IMAGING QUALITY

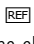
focused on bone – not metal

ICOTEC ETURN® TLIF CAGE

icotec ETurn® TLIF Cages

Description	Length	Width	Height	Reference number
icotec ETurn® TLIF Cage	32 mm	12 mm	7 mm	13-57-12-32-07-ITi
			8 mm	13-57-12-32-08-ITi
			9 mm	13-57-12-32-09-ITi
			10 mm	13-57-12-32-10-ITi
			11 mm	13-57-12-32-11-ITi
			12 mm	13-57-12-32-12-ITi
			13 mm	13-57-12-32-13-ITi
			14 mm	13-57-12-32-14-ITi
			15 mm	13-57-12-32-15-ITi
icotec ETurn® TLIF Cage	32 mm	16 mm	7 mm	13-58-16-32-07-ITi
			8 mm	13-58-16-32-08-ITi
			9 mm	13-58-16-32-09-ITi
			10 mm	13-58-16-32-10-ITi
			11 mm	13-58-16-32-11-ITi
			12 mm	13-58-16-32-12-ITi
			13 mm	13-58-16-32-13-ITi
			14 mm	13-58-16-32-14-ITi
			15 mm	13-58-16-32-15-ITi



Information needed to use the device is made available in electronic form; current and previous versions can be downloaded in electronic form at ifu.icotec-medical.com (code = ) or can be requested by email or phone from icotec. On request, icotec will provide a paper version within seven calendar days at no charge. The electronic versions can be viewed with a freely available PDF reader (e.g., Adobe Acrobat Reader, which can be downloaded at www.adobe.com).



ifu.icotec-medical.com

ico | cæ t

icotec ag

Contact in the USA:

222 Pitkin Street, Suite 115 G
 East Hartford CT 06108
 United States
 Phone: (860) 652-5313
 Fax: (860) 454-0625
info@icotec-medical.com
www.icotec-medical.com