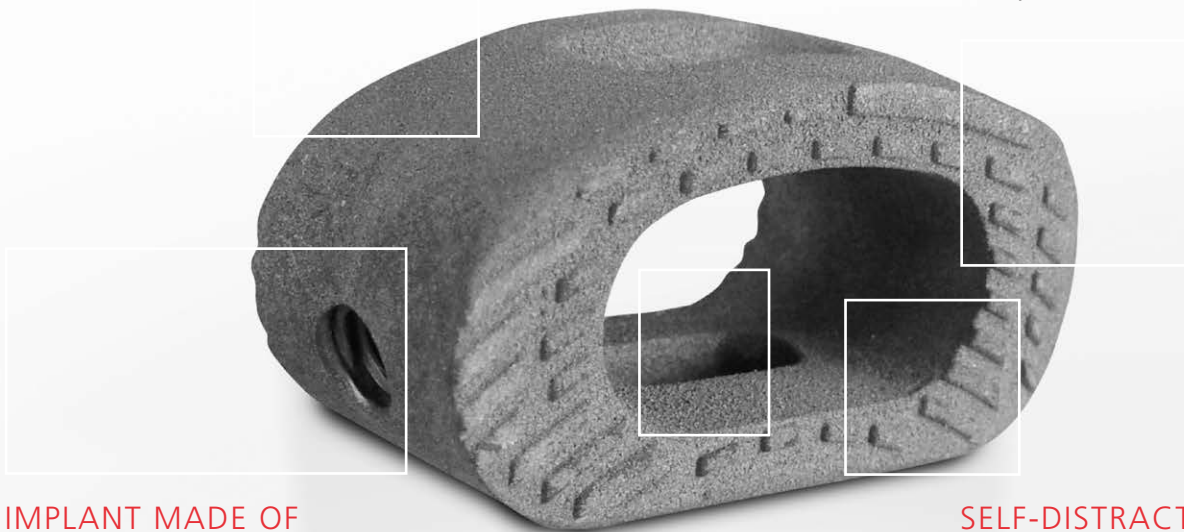


ROUGH Ti-iT® TITANIUM COATING

Osseointegrative surface results in improved bone ongrowth apposition⁽²⁾

INTEGRATED RIDGES

Enhancing guidance and primary stability



IMPLANT MADE OF BLACKARMOR®

Reduced artifacts in postoperative imaging procedures⁽¹⁾

GRAFT WINDOW

Allows fusion through the cage

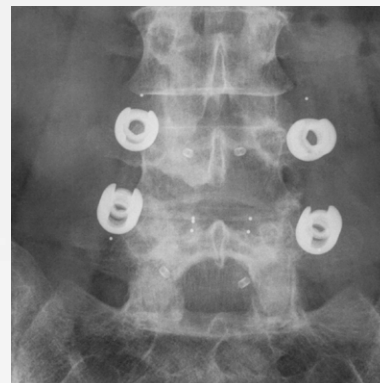
SELF-DISTRACTION

Distraction wedge to guide the implant

inspired by nature – built by icotec

ICOTEC ETURN® TLIF CAGE

Factsheet



EXCELLENT IMAGING QUALITY

focused on bone – not metal

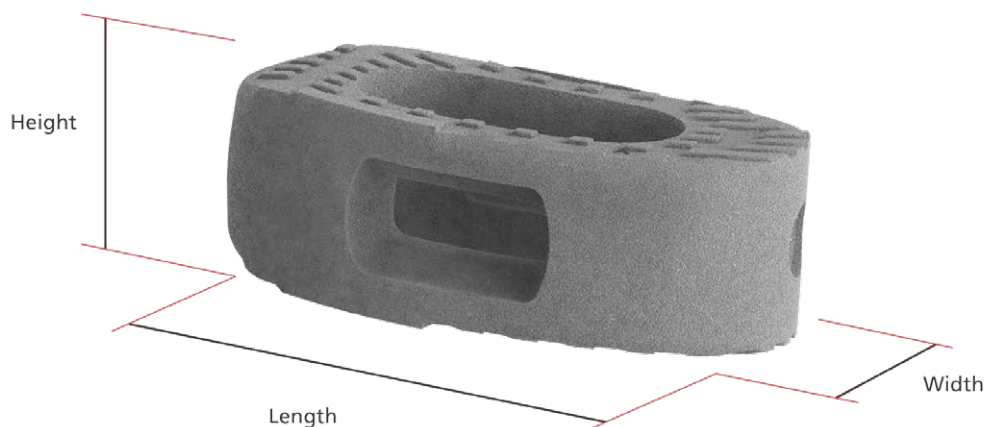


Carbon/PEEK implant material from icotec

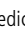
ICOTEC ETURN® TLIF CAGE

icotec ETurn® TLIF Cages

Description	Length	Width	Height	Reference number
icotec ETurn® TLIF Cage	32 mm	12 mm	7 mm	12-57-12-32-07-ITi
			8 mm	12-57-12-32-08-ITi
			9 mm	12-57-12-32-09-ITi
			10 mm	12-57-12-32-10-ITi
			11 mm	12-57-12-32-11-ITi
			12 mm	12-57-12-32-12-ITi
			13 mm	12-57-12-32-13-ITi
			14 mm	12-57-12-32-14-ITi
			15 mm	12-57-12-32-15 ITi
icotec ETurn® TLIF Cage	32 mm	16 mm	7 mm	12-58-16-32-07-ITi
			8 mm	12-58-16-32-08-ITi
			9 mm	12-58-16-32-09-ITi
			10 mm	12-58-16-32-10-ITi
			11 mm	12-58-16-32-11-ITi
			12 mm	12-58-16-32-12-ITi
			13 mm	12-58-16-32-13-ITi
			14 mm	12-58-16-32-14-ITi
			15 mm	12-58-16-32-15-ITi



1. Ringel (2017): Radiolucent Carbon Fiber-Reinforced Pedicle Screws for the Treatment of Spinal Tumors: Advantages for Radiation Planning and Follow-Up Imaging. *World Neurosurgery*.
2. Hoppe (2018): First Results of a New Vacuum Plasma Sprayed (VPS) Titanium-Coated Carbon/PEEK Composite Cage for Lumbar Interbody Fusion. *Journal of Functional Biomaterials*.

Information needed to use the device and a glossary of symbols that may appear on the product labeling and the meaning of the symbols are made available in electronic form; current and previous versions can be downloaded in electronic form at ifu.icotec-medical.com (code = ) or can be requested by email or phone from icotec. On request, icotec will provide a paper version within seven calendar days at no charge. The electronic versions can be viewed with a freely available PDF reader (e.g., Adobe Acrobat Reader, which can be downloaded at www.adobe.com).



ifu.icotec-medical.com

ico | cœt



icotec Medical GmbH
In der Au 25
61440 Oberursel
Germany

 icotec ag

Industriestrasse 12
9450 Altstätten
Switzerland
Phone: +41 71 757 00 00
Fax: +41 71 757 00 01
info@icotec.ch
www.icotec-medical.com

CE 0297