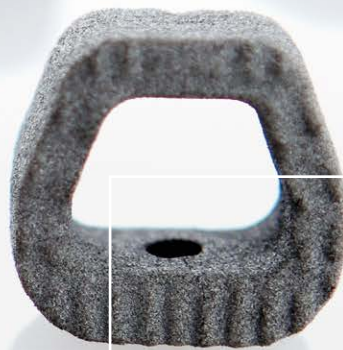


## IMPLANT MADE OF BLACKARMOR®

A nonmetallic, radiolucent material  
for reduced imaging artifacts

## ANATOMICAL SHAPE

For precise and secure implantation



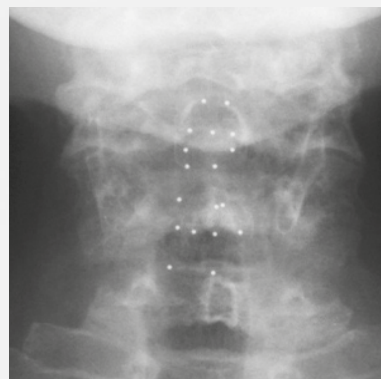
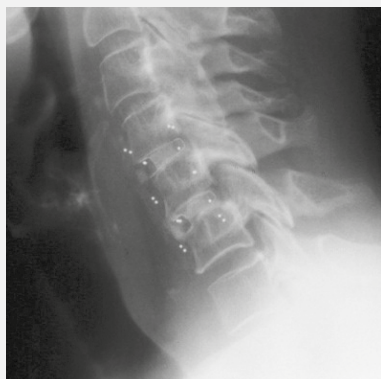
## SECURE FIXATION TO BONE

Rough titanium coating

inspired by nature – built by icotec

## ICOTEC CERVICAL CAGE

Factsheet



## EXCELLENT IMAGING QUALITY

focused on bone – not metal

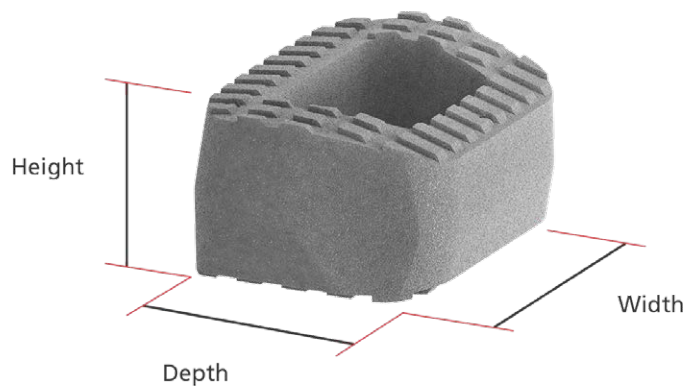


Carbon/PEEK implant material from icotec

# ICOTEC CERVICAL CAGE

## icotec Cervical Cages – Anatomic

Description	Depth	Width	Height	Reference number
icotec Cervical Cage, anatomic	13 mm	13 mm	5 mm	13-41-0513
			6 mm	13-41-0613
			7 mm	13-41-0713
icotec Cervical Cage, anatomic	13 mm	16 mm	5 mm	13-41-0516
			6 mm	13-41-0616
			7 mm	13-41-0716
			8 mm	13-41-0816
icotec Cervical Cage, anatomic	13 mm	18 mm	5 mm	13-41-0518
			6 mm	13-41-0618
			7 mm	13-41-0718
			8 mm	13-41-0818



ico | cœt

 icotec ag

Industriestrasse 12  
9450 Altstätten  
Switzerland  
Phone: +41 71 757 00 00  
Fax: +41 71 757 00 01  
info@icotec.ch  
www.icotec-medical.com

013005.2018-06